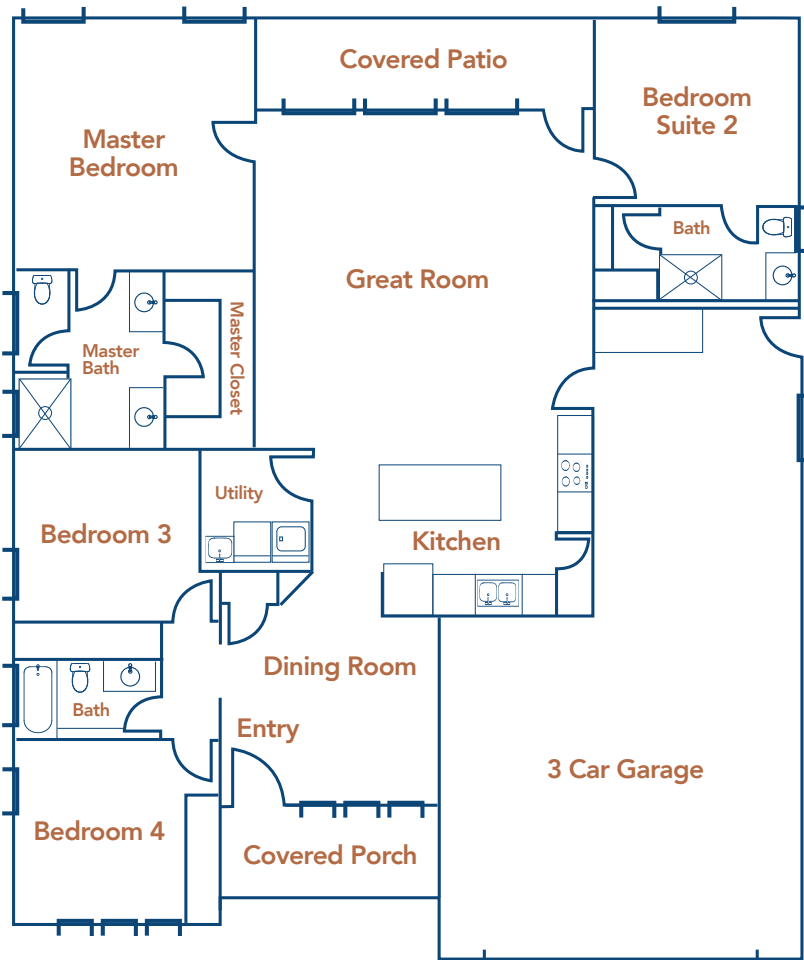




BELFORD

2,103 Sq. Ft.











THUNDER Valley

SUBDIVISION

Built for Life. Built for Lifestyle.

Thoughtfully designed single and two story homes built on 22 years of superior craftsmanship and trust from Epic Homes.

-  Quality Construction & Finishes Throughout
-  RV Parking
-  3 Car Garage
-  Vinyl Fenced Back Yards
-  Landscaped Front Yards
-  Granite Countertops
-  Bright & Open
-  Neighboring Thunder Mountain Elementary

Offered by
BRAY
 REAL ESTATE

HARRY PERRY (970) 623-9849
 RON JENS (970) 260-5011
 TYLER HARRIS (970) 314-3884



www.thundervalleygj.com